



# The Rockhounder

June 2016

The purpose of the Gem, Lapidary, and Mineral Society of Montgomery County MD, Inc. is “to increase knowledge and popular interest in earth sciences, geology, mineralogy, paleontology, lapidary arts, and related subjects.”

**NOTE:** Please send any Rockhounder submissions for the July-August issue to Editor Olivia Luzier at [editor@glmsmc.com](mailto:editor@glmsmc.com) by Thursday, June 30, 2016.

## Regular Meeting Announcements

Gary Leaman, Vice President

**June Speaker:** Conrad Smith

**Title of Talk:** Conrad’s Experiences During His Time at the New Mexico Institute of Mining and Technology

### Conrad Smith’s Biography Information:

Conrad Smith is currently a rising sophomore at the New Mexico Institute of Mining and Technology, working towards a double major in Mineral Engineering and Geology. His interest in minerals started at the early age of six when his grandfather, Earl Smith III, began to introduce him to mineralogy. His experiences with assisting at the Nature Stations at the Potomac and White Oak Cub Scout Day Camps led him to the formation of the Mini Miners which he ran in concert with his mother, Linda Smith, for 5 years. Conrad is an Eagle Scout. His Eagle project was to develop and run a modular education center, known as The Youth Introduction to Earth Sciences Area (Y.I.E.S.A.). Y.I.E.S.A. contains teaching tools and instructions that allow someone with or without prior knowledge of earth sciences to teach others, enabling everyone to learn. Y.I.E.S.A. was donated to the GLMSMC at the conclusion of his project so

*Continued on page 2*

### Next Regular Meeting:

**Date:** Monday, June 13, 2016

**Time:** 7:30 PM

### Place:

Rockville Senior Center,  
1150 Carnation Drive  
Rockville, MD

### Next Board of Directors Meeting:

The Board of Directors will meet 7:30 PM on **Monday, May 20, 2016** at the home of Holly McNeil. Board members are expected to be there. Any member is welcome to attend, but please let Holly know if you plan to attend.

### Inside this issue:

Item	Page
Meeting Announcements, Speaker	1
President’s Message	2
Regular Meeting Minutes	3
Board Meeting Minutes	5
FRA Meeting Minutes	6
Regular Meeting Pictures	7
A Note on Sharing	9
Websites of Interest	11
Field Trip News	12
Manassas Quarry Pictures	12
Stafford Quarry Pictures	13
Medford Quarry Trip Report	16
Chesapeake-Delaware Canal	17
Wildacres Workshop	18
Show Table for Regular Meeting	19
Upcoming Shows	20



---

## June Speaker Information (Cont'd)

*Continued from page 1*

that it could be used to educate others. To date, this exhibit has been shown for three years at the GLMSMC Show, two years at the Northern Virginia Club Mineral Show, used at two Webelos Geology Day Events, and at several Cub Scout Day Camps. Conrad has also spoken to many Cub Scout Packs and for the last six years, he spends the day at Ashburton Elementary School in Bethesda, where he talks about Rocks and Minerals and how we use them every day to the entire 3rd grade.

During the summers of 2012 and 2013, he interned at the Smithsonian Institution at the Museum of Natural History in the Department of Mineral Sciences under the direction of Doctor Michael Wise. Over the course of the first internships, he helped chart the paragenesis of the Bennett pegmatite. In the second internship, he identified, mapped, and charted the basic mineralogy and location of the various known pegmatites in Maryland. Conrad has served as staff at the 2013 National Scout Jamboree in the Geology Program and worked at the Rockville Science Center's Geology Camp in 2013.

He graduated from Walter Johnson High School in May of 2016. As a result of interests both in and out of his higher education, Conrad has been to many working and abandoned mines sites throughout the state of New Mexico. He is very interested in mining history, mineralogy and future mine remediation technologies. He will speak about his experiences during his time at the New Mexico Institute of Mining and Technology.

---

## President's Message

Jonathan G. Harris

Now that summer is kicking in, there is still plenty to do even though we have a break in our meetings. Thanks to air-conditioning, those with the lapidary itch or micro-mounting and photography interests can continue without breaking a sweat. Field collectors will just have to bear the heat, travel to cooler places to collect, or pursue the indoor activities.

During the summer, we hope to have a few more field trips. If you travel out-of-state, there are a few fee-collecting areas, as well as some free ones to explore. Franklin, NJ, and Herkimer, NY, are among the most famous. Alternatively, I have found that many builders and real estate agents will give permission to individual rockhounds to examine safe areas of construction sites.

Unfortunately, some formerly accessible sites have been closed by private landowners and governments. Sometimes this is due to new ownership or rules. All too often it is due to abusive

*Continued on page 3*



---

## President's Message (Cont'd)

*Continued from page 2*

practices such as mining using power equipment without permission, over-collecting resulting in depletion of specimens, and digging-related damage to natural features and to stream banks.

If you are traveling to California, there is one piece of good news. Due to the voices of the California Rockhounds, with support from Senator Feinstein, the Bureau of Land Management has clarified that in the newly created Mojave Trails National Monument, rockhounding will continue to be permitted in accordance with BLM's rock collecting guidelines for now. For the longer term, BLM will develop a "management plan" which determines the permitted activities. Hopefully the rockhounding community can work with the BLM to insure that rockhounding is one of them.

Closer to home, I can be optimistic that fossil collecting will continue to be allowed in the new Mallow's Bay Marine Sanctuary area, which touches Purse State Park—a site for fossil shark and crocodile teeth. The booklet from local conservation groups promoting the sanctuary listed fossil collecting as one of the factors that makes the area worth preserving.

---

## GLMSMC Regular Meeting Minutes for May 9, 2016

Jeff Cessna

The May 9, 2016 meeting was called to order by President Jonathan Harris at approximately 7:44 pm. There were approximately 47 people (40 adults, 7 juniors) in attendance. It was M/S/P to approve the minutes of the April 11, 2016 regular meeting. It was M/S/P to approve the minutes of the April 18, 2016 with a correction/clarification – the date of the event for which the club is assisting Karen Lottes is October 23rd, not October 1st as was listed in the minutes.

**President:** Jonathan Harris noted there were several items for auction during the meeting. As Field Trip Chair Dave Fryauff was not present, Jonathan listed upcoming field trips.

**Treasurer:** Tom Dushel reported that the deposit for the Show venue had been paid and trailer license fees had been paid.

**Show:** Dave Tiktinsky transmitted thanks from Holly McNeil to all demonstrators, exhibitors,

*Continued on page 4*



## GLMSMC Regular Meeting Minutes for May 9, 2016

*Continued from page 3*

and volunteers. He also reported for Holly that the conflict with the Delaware club dates for next year had been resolved, the deposit has been paid, the contract signed, and the new dates listed on the website. Flyers for the Show were available. Dave had nothing new to report. He has received no complaints from the dealers since the Show. Jonathan Harris expressed his thanks to Dave and Holly.

**Program:** Gary Leaman introduced the speaker for the evening, member Jake Slagle. The author of two blogs, Maryland Minerals and Mineral Bliss, Jake presented a program covering (in his view) the most extreme, rare, and spectacular with respect to Maryland minerals. He discussed many mineral localities in MD and several noted MD mineral collectors, such as Fred Parker. Many colorful pictures were shown of species rare to MD, often available only in micros. He also discussed MD specimens from museum collections, including a previously incorrectly labeled specimen from the Bare Hills Chromite Mine. His correct identification of magnetite rather than chromite earned him an invitation to help organize the MD minerals in the Harvard collection. Also noted was the club's own collection of MD minerals, formerly from the Philadelphia Academy. Even new finds were noted, including an agate found in MD. In all, it was a wealth of information. Thanks, Jake.

**Membership:** It was M/S/P to accept the membership of King Stablein from Bethesda and Nancy Mueller and her daughter Nicole from Germantown. From the annual show, it was M/S/P to accept the memberships of Eric Wolberg and Courtney Sunderland

The auctions for the evening were concluded with both silent and live auctions.

Joel Rosen administered the show table and door prizes.

It was announced that the BOD meeting would be held in two weeks on the 23rd, rather than the usual one week.

**Adjournment:** It was M/S/P to adjourn the meeting at 9:40 PM.

Jeff Cessna, Secretary.

---



---

## GLMSMC Board Meeting Minutes for May 23, 2016

Jeff Cessna

**Board Members Present:** Jeff Cessna, Dave Fryauff, Jonathan Harris, Gary Leaman, Chris Luzier, Holly McNeil, Wendell Mohr, Joel Rosen, and Dave Tiktinsky.

**Board Members Not Present:** Doug Baum, Tom Dushel. President Jonathan Harris called the May 23, 2016 meeting to order at 7:32 pm.

Dave Tiktinsky reported on a communication from the Rockville Science Center requesting support from the club for giveaways. Jonathan Harris has some material he can donate. Chris Luzier may be able to provide donations. Holly McNeil was noted that donations had previously been promised for the program by Karen Lottes on October 23rd and that more specimens could be used.

**Show:** Dave Tiktinsky presented draft updates to the contract to reflect Board decisions regarding time to vacate the building and use of extra tables for sale space. Chris Luzier reported that Gary Leaman had provided him with 232 partially finished pre-forms for completion. Joel Rosen discussed Andy Celmer's request to remove two grinding units from the trailer. The Upstairs and Downstairs Show Chairs should coordinate on duties. Holly McNeil reminded the Board that she agreed to serve for two years as Downstairs Show Chair. There was a brief period of stunned silence. A new Downstairs Show Chair should start duties in September of 2017.

**Treasurer:** Gary Leaman will deliver the club laptop to the Treasurer for use with the club copy of Quicken. The Treasurer must update the computer and verify functioning in advance of meeting and deliver the computer for use during presentations.

**EFMLS Liaison:** It was M/S/P (w/ 1 abstention) that the Membership Chair shall send out changes to the roster to all Board members with the changes in bold as changes occur. Discussion of Rockhounder of the Year was undertaken. Of two motions one was rejected by a previous recipient and died for lack of a second. It was M/S/P to name Chris Luzier as Rockhounder of the Year in recognition of his service to the club.

A discussion of an offer to the club of many tons of lapidary material was discussed. The volume is too large and the club does not purchase for resale.

**Secretary:** Chris Luzier will take the minutes of the June Regular Meeting. The Secretary will provide a template and provide a show table sign-in sheet.

**Programs:** Dave Fryauff enjoyed Wildacres and is prepared to provide a program.

*Continued on page 6*



---

## GLMSMC Board Meeting Minutes for May 23, 2016 (Cont'd)

*Continued from page 5*

**Field Trips:** Dave Fryauff discussed recent field trips and efforts to secure more trips. Juniors on field trips were discussed. This can vary by quarry. Jonathan Harris noted which quarries were more likely to allow juniors.

The meeting was adjourned at approximately 8:45 PM.

Jeff Cessna, Secretary.

---

### Future Rockhounds of America (The MOCKS) Ages 10-15

**Next Meeting Date:** June 13, 2016

**Meeting Time:** 7:45-9:00pm

**Meeting Location:** Sunroom Cafeteria at the Rockville Senior Center

#### May 9th Meeting:

Our May meeting of the FRA was a combination of planning, thanks to Jennifer Weiss, and many examples of mineral luster with the help of Holly McNeil. Jennifer presented plans for an exciting project: our first FRA publication. All FRA members are encouraged to take part by submitting original articles, art work, and photos—anything related to FRA subjects. We also reviewed the many types of mineral luster as part of the Rocks and Minerals badge. We finished the evening with door prizes, thanks to the generous donations of GLMSMC members.

#### June 13th Meeting:

We'll start the June meeting by presenting the Showmanship badges to the FRA members who earned them this spring. We're also going to continue working on mineral identification for the Rocks and Minerals badge. In order to complete one of the badge activities, each FRA member will use their mineral ID kit to identify six minerals. Please bring the mineral test kit you made and your loupe (if you have one). Since this will be the last meeting until September, we'll discuss the remaining activities each FRA member can do over the summer to earn the Rocks and Minerals badge.

Bring a friend if you'd like—see you there!

For more information on the Future Rockhounds of America program, please contact Mark Dahlman at <fra\_advisor@glmsmc.com> or 301-428-0455.



May 9th Regular Meeting Pictures



Photos courtesy of Holly McNeil



## May 9th Regular Meeting Pictures (Cont'd)

Jeff Cessna won the chrysocolla  
show table prize!



Photo courtesy of Holly McNeil





## A Note on Sharing

Gerald Elgert

In a special display case at the Natural History Museum of the Smithsonian there sits the impression of a baby dinosaur that was found and collected, not in the wilds of some exotic land, but right in our backyard in College Park. All of this by an amateur who decided to share his find with all of us! That just about sums up the theme of not only that display in the Smithsonian but also at our very own Dinosaur Park in Laurel, Maryland: the importance of amateurs collecting alongside of the professionals and sharing their finds with the public.

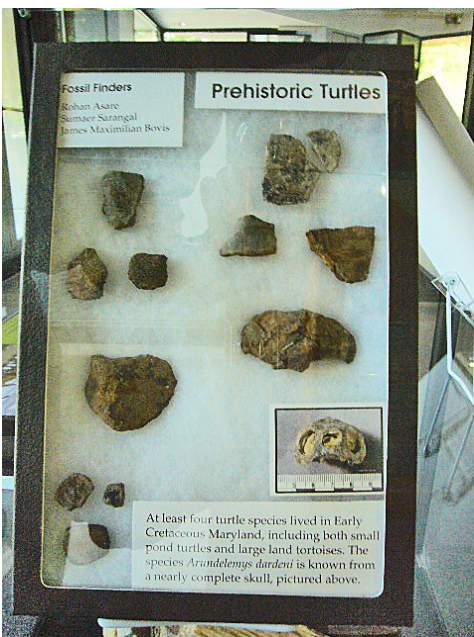
While baby dinosaurs haven't yet been discovered at the Dinosaur Park, there is an amazing list of the animals and plants that once lived there some 112 millions of years ago. These animals and plants are now known by their fossilized remains, such as teeth, bones, armor, and logs of petrified wood. You can see many of these finds in a special exhibit case located in the Maryland Welcome Center, which is located on I-95 South, mile marker 37, just before the turnoff for Route 216. It's something to consider doing.

You can check out the baby dinosaur at a Smithsonian website, which includes a video at:

<http://qrius.si.edu/watch/what-it-discover-new-dinosaur-species>

The Dinosaur Park at Muirkirk can be reached here:

[http://history.pgparcs.com/sites\\_and\\_museums/Dinosaur\\_Park.htm](http://history.pgparcs.com/sites_and_museums/Dinosaur_Park.htm)



For more pictures, see page 8

A Note on Sharing (Cont'd)

Continued from page 7



Websites of Interest

Wendell C. Mohr

**Inside the Billion-Dollar Dig to America’s Biggest Copper Deposit**

By Matthew Philips

See the 5 minute video about the 4th largest untouched copper deposit in the world about an hour east of Phoenix, AZ. When done, Resolution will be the biggest copper mine in the U.S. at 7000 ft. deep and HOT!

<http://www.bloomberg.com/features/2016-arizona-copper-mine/>



Photo from website

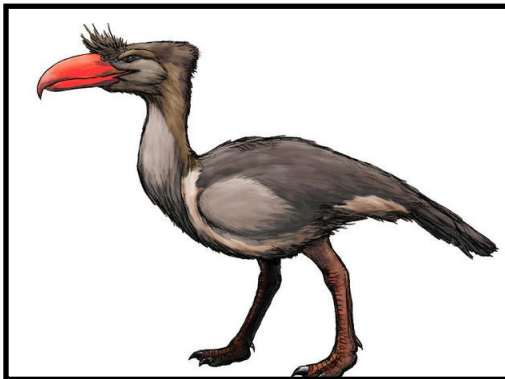


Photo from website

**9 Extinct Big Birds**

Gastornis, Pelagornis Chilensis, Pelagornis Sandersi, Andalgalornis, Kelenken, Titanis Walleri, Haast’s Eagle, Dinornis, and Argentavis are the species of real birds that have roamed the earth in the past and featured at this site. Ranging in age from as recently as perhaps only 500 years to 55 million years ago and with wing spans up to possibly 24 feet, these babies extended around the world.

<http://mentalfloss.com/article/58683/9-extinct-big-birds>

**Salt Glaciers**

Because salt flows more readily and is less dense than other rocks, teardrop-shaped plugs of salt—diapirs—squeeze upward, pushing through layers of overlying rock until salt reaches the surface and begins spilling out into the basin as salt glaciers. Shown are ones in the Xinjiang province of western China beneath the Tien Shan mountains.

In wet areas with active salt tectonics, the salt rapidly dissolves as it reaches the surface, but in an arid region like the Kuqa fold-thrust belt, the dissolution is slow enough that the salt can form flowing bodies like the salt glaciers seen here. Iran also has many salt glaciers similar to these salt glaciers.

<http://earthobservatory.nasa.gov/IOTD/view.php?id=86861>



Photo from website



## Field Trip News

Dave Fryauff

### Upcoming Field Trips:

**1. Saturday, June 4th: Middleburg/National Limestone**

- 9 AM- 12 PM
- Meet at Middleburg Quarry: 3499 Quarry Rd, Middleburg PA 17842
- After 12 PM, travel to Mt Pleasant Mills: 217 Quarry Rd, Mt Pleasant Mills PA 17853

**2. Saturday, June 4th & Saturday, June 18th: Vulcan Manassas Quarry in Manassas, VA.**

- Mr. K.T. Odum of Vulcan Materials Inc. will be our host & safety monitor for both dates and asks us to be there at 7 AM for log-in & safety briefing. We can collect until noon. I have communicated this information to our partner EFMLS clubs in Delaware, So MD, & No VA, & Shenandoah, VA.

**3. Sunday, June 5th: DMS invite to Purse State Park, Charles Co., MD for low tide fossil collecting**

- Contact Tom Pankratz at <tjpankratz@verizon.net>

---

### Pictures from June 4th Manassas Quarry Trip



Stellerites from Manassas

Continued on page 13

**Pictures from June 4th Manassas Quarry Trip**

The biggest specimen found at Manassas quarry  
on our June 4th field trip.



Pictures courtesy of Dave Fryauff

---

**Pictures from May 7th Stafford/Garrisonville Trip**



Yellow Stillbites from Garrisonville

*Continued on page 13*



Pictures from May 7th Stafford/Garrisonville Quarry Trip

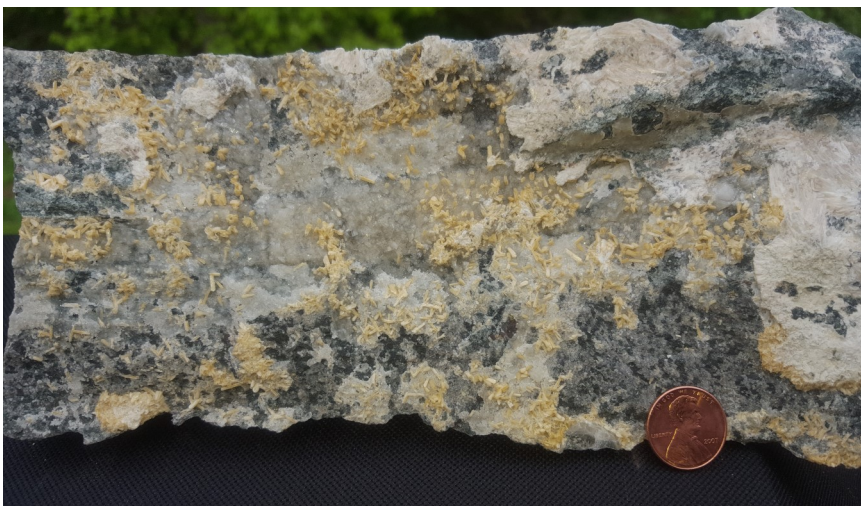
Continued from page 12



The pit at Garrisonville



Laumontite from the quarry



Stilbite, calcite, laumontite plate  
Collected by Dave Fryauff

Continued on page 14

Pictures courtesy of Dave Fryauff

Pictures from May 7th Stafford/Garrisonville Quarry Trip

Amphibole supergroup



Rockhounds pose for a picture at Stafford



Pictures courtesy of Dave Fryauff



## Medford Quarry Field Trip Report

Dave Fryauff

Yesterday, May 24, 2016, was a beautiful day to be out in the Maryland countryside. I was excited to collect for the first time in the Medford quarry. I missed last year's April trip to Medford when some excellent mineral specimens (Pyrrhotite, Chalcopyrite) were collected. For a Tuesday morning, this was a surprisingly BIG group of rockhounds!!! I got there early and there must have been 30 cars parked at the main entrance waiting for directions or an escort from the quarry to come inside. The quarry was working and lots of big trucks were coming in empty and going out with their loads. It did not look good to me.

Finally, we had an escort from the main office direct us down to park and go through a quick safety talk. We each signed a company form verifying the training we got and listing our names and club affiliation. From our club I only saw Sam Linton, Chris Luzier, Lyle Peterson, and Chris and Mary Crosswhite. There seemed to be many more people from the Baltimore Mineral Society and the Chesapeake Gemcutter clubs....probably several other regional clubs.

I thought our Sam Linton had organized this one but it seemed that a guy named Richard with the Chesapeake or Baltimore club was the big organizer and leader for the many rockhounds who showed up. So this was very much a joint trip with other clubs!!! In contrast to the Texas and Beaver Creek Bluegrass quarries, which were both a bust, this Medford visit was great. A very nice Bluegrass staff person named Melissa took charge of us and seemed not at all flustered by our numbers. She escorted us down into the upper half of their flooded, unused southern quarry and we all got busy trying to find undamaged, sparkly calcite xls.

There seemed to be little to no other mineral species down there; there were a bit of manganese oxide dendrites and that enigmatic todorokite that occurs as oily smears and tiny metallic blobs on the calcite xls. I found a tiny malachite xl, but it was damaged. People said there was more malachite around, but I did not see it. No sign of zeolites. Tons of calcite, but so soft and easily bruised that you really needed to look long and hard to find undamaged specimens. I never did find an undamaged keeper, but Sam Linton worked next to me for most of the time we were there and pulled several nice, undamaged 8-10 inch plates of calcite xls from a vug that he uncovered. It seemed like almost everyone found some calcite xls (or the pink banded marble) worth hauling home.

---





---

## Fossil Collecting on the Chesapeake-Delaware Canal

Dave Fryauff and Olivia Luzier

There is a fossil collecting site in Delaware along the Chesapeake-Delaware canal. The US Army Corps of Engineers dredged this 14 mile long canal and all of the big piles of sandy mud that was dredged up was piled along the sides of this canal. These piles are now a great place for collecting Cretaceous marine fossils (mainly belemnites, which are squids) and oyster shells. Mososaur and shark fossils have also been found in this area. The deposit is more than 65 million years old. The only spoil piles that are available and accessible for collecting are those at the Delaware Bay mouth of the canal, south of Delaware City. Please use the detailed directions provided below (by Tom Pankratz) to get to the best places for fossil collecting:

- The site is on the north side of the canal at the Delaware River end. To get there, go south on DE 9 into Delaware City. Go through the only stop light there. Go a bit further south on DE 9 until you cross over a small bridge (if you go over the great big Reedy Point Bridge you have gone too far). Immediately after you cross the little bridge, turn right. This road will take you towards Fort Delaware and Fort DuPont State Park. Keep going past the park; go as far as you can and at the barrier, turn left. This is a dirt road, but a good one.
- Go under the Reedy Point Bridge. Go just a bit further (maybe 150 yards or so) and you'll see a dirt road angling off to your left. Park somewhere there. Don't block the road; there are a lot of folks fishing just a bit further on.
- Walk up the 'angling' road, go under or around the cable barrier, and continue up the little bit of a hill about 40 steps. Now there will be a 2" stone/dirt road on your left; go up that road to the top of the berm and before you will be a great big plowed dirt area. You are there.
- Look anywhere there is free dirt (you'll find belemnites) though you'll likely find more a bit further out the field where not so many people have collected. You can bring a 1/2 " wire screen and shovel to really load up, or just a lawn rake to move the sandy dirt just a bit to get the bazillions of belemnites that are hiding just below the surface.

This is not a field trip, rather information in case anyone decides they want to go. This is a great site for families! However, there are ticks in the brush so even if you haven't gone near the brush, be sure to give yourself a "tick check" after collecting. Happy collecting!

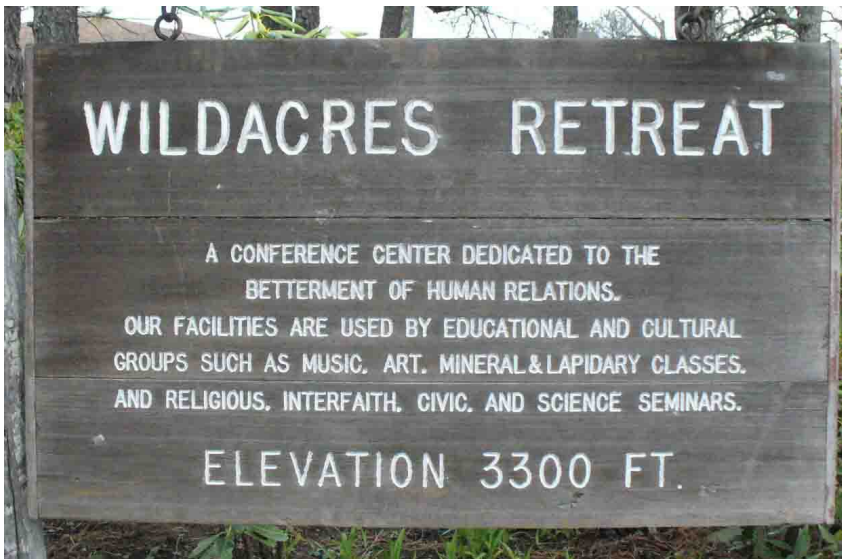
---



## The Wildacres Workshops

Gerald Elgert

If you've never been to a Wildacres session, you are missing out on a fun-filled week of home-cooked meals, fellowship, and classes in everything from geology to lapidary and even flint knapping. The week-long classes are held at a retreat center on a mountaintop near Little Switzerland in North Carolina. The cost for a week includes a room and three chef-prepared buffet style meals each day. There will be a Speaker in Residence, who will present a talk each evening on his or her field and experiences. There is also a special Comedy and Fun Night, an auction, plus the ever popular tailgating session. There is even a newspaper, which is published by those attending. The workshops are held twice each year, in the spring and in the fall.



The welcome sign at Wildacres

A class break at Wildacres





Show Table for May 9th Regular Meeting

Gary Leaman	White Quartz	Gaithersburg, MD
Diane Leaman	Covellite XTLS	Butte, Montana
Frances Becker	Two Willemite/Calcite	Sterling Hill Mine
Barb Burr	Cape May Diamonds	Cape May, NJ
Jeff Cessna	Willemite/Calcite	Franklin/Ogdensburg, NJ
	Hardystonite/Calcite	Franklin, NJ
	Norbergite	Franklin/Ogdensburg, NJ
Wendell Mohr	Styracosaurus Coin	Canada Mint
Steve Calamuci	Stilbite, Rhodochrosite, and Opal Specimens	India, Peru and Ethiopia
Joel Rosen	Calcite	Bussey, Iowa
Nancy Shinawara	Benitoite & Neptunite	San Benito, CA
	Mariposite, Gold	Mariposa, CA
Ken Reynolds	Sphalerite	Buckwheat Dump- Franklin, NJ
George Durland	Calcite	Medford Quarry- Westminster, MD
	Clinohedrite/Bustamite	Franklin, NJ
Jonathan Harris	Calcite	Stafford Quarry-Stafford, VA
	Analcime, Serandite	Mt. St. Hilaire- Quebec, CA
	Monazite	Putnam Mine- Mitchell County, NC
Chuck Mason	Mica Schist & Garnet	Northwest Branch- Montgomery County, MD

Continued on page 20



---

## Show Table for May 9th Regular Meeting

*Continued from page 19*

### Door Prizes:

**Show Table:** Chrysocolla—Katanga, Zaire (Shaba)  
Jeff Cessna

**General:** Labradorite  
Tom Dushel

---

### Upcoming Shows

#### Annual Fossil & Mineral Show

Sponsored by the Lancaster Co. Fossil &  
Mineral Club

June 17-18th, 2016

Lancaster Co., PA

Contact:

[silverfordinc@yahoo.com](mailto:silverfordinc@yahoo.com)

*Continued on page 21*



## Upcoming Shows

*Continued from page 20*

### **The Southern Maryland Rock and Mineral Club is graciously sponsoring the 2016 EFMLS Region Potluck Picnic and Rock Swap/Sale!**

Details are as follows:

**Event:** 2016 EFMLS Region IV Potluck Picnic and Rock Swap/Sale

**Sponsored by:** Southern Maryland Rock and Mineral Club

**Date:** Saturday, June 18, 2016

**Time:** 9:00 AM - 5:00 PM

**Location:** Gilbert Run Recreational Park

13140 Charles Street

Charlotte Hall, MD

Admission to the Park is \$5 per carload

(No charge for swapping or selling)

**Contact Person:** Dave Lines (240) 427-7062

Dave.Lines@earthlink.net (mailto: dave.lines@earthlink.net)

If you are planning a trip and want to know what clubs you might be able to visit, it would be worthwhile to visit the American Federation of Mineralogical Societies website. Check out their newsletter archives at <http://www.amfed.org/news/default.htm>.





**BOARD OF DIRECTORS**

**President** – Jonathan Harris, 11932 Goya Drive, Potomac, MD 20854-3313, (301-545- 0808)

**Vice President** – Gary Leaman, 7524 Cinnabar Terrace, Gaithersburg, MD 20879-4577,  
(301-963-3702)

**Secretary** – Jeff Cessna, 12116 Cliftondale Drive, Silver Spring, MD 20904-1941, (301-680-7963)

**Treasurer** – Tom Dushel, 108 Berrywood Drive, Severna Park MD 21146-2004, (443-514-6734)

**Field Trip Chairman** – Dave Fryauff, 24109 Sugar Cane Lane, Laytonsville MD 20882-4031,  
(301-253-1687)

**Membership Chairman** – Doug Baum, 11205 Golden Meadow Ct, Germantown, MD 20876-1740,  
(301-515-4641)

**Downstairs Showchair** – Holly McNeil, 22 South Duke Street, Rockville, MD, 20850-1014,  
(301-605-7179)

**Upstairs Showchair** – Dave Tiktinsky, 9209 Laurel Oak Drive, Bethesda, MD 20817-1937,  
(301-365-2812)

**Property Manager** – Joel Rosen, 833 Rampart Way, Union Bridge, MD 21791-9325, (410-775-7937)

**Immediate Past President** – Chris Luzier, 847 Springdale Drive, Millersville, MD, 21108-1436,  
(443-995-5363)

**EFMLS Liaison** – Wendell Mohr, 9509 Emory Grove Road, Gaithersburg, MD 20877-3501,  
(301-926-7190)

**Bulletin Editor**– Olivia Luzier, 847 Springdale Drive, Millersville, MD 21108-1436  
([editor@glmsmc.com](mailto:editor@glmsmc.com))

**Life Members:** Larry Harrison, Wendell Mohr, Juan Proaño, and George Durland

**Society Address:** Gem, Lapidary, and Mineral Society of Montgomery County MD., Inc.  
P. O. Box 444, Gaithersburg MD 20884-0444

**Website:** <http://www.glmsmc.com/>

All Society correspondence is to be sent to this address except that which is intended for The Rockhounder and its editor. Such items are to be sent to the editor's email address at [editor@glmsmc.com](mailto:editor@glmsmc.com).

Permission to copy material printed herein, except specifically copyrighted items, is granted, provided credit is given.

Award Winning Bulletin  
EFMLS, AFMS



**TIME SENSITIVE  
DATED MATERIAL  
FIRST CLASS MAIL**

**The Rockhounder  
Gem, Lapidary, and Mineral Society  
of Montgomery County, MD, Inc.  
P. O. Box 444, Gaithersburg MD  
20884-0444**